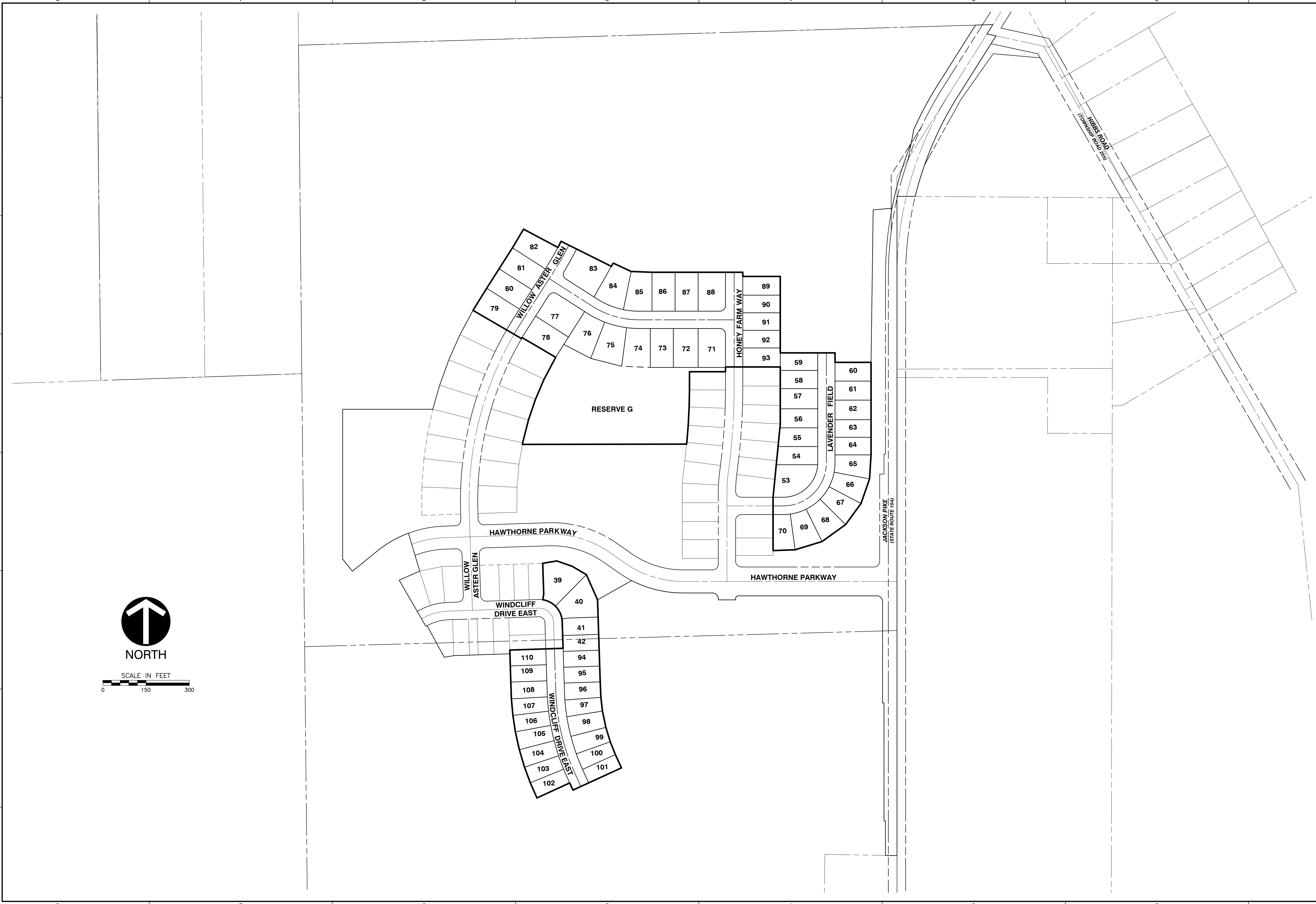



P:\2017\174-158-Survey\Draw\Phase 2.dwg(SHEET 2) LS(11/23/2020 - mward) - LP: 11/23/2020 7:28 AM

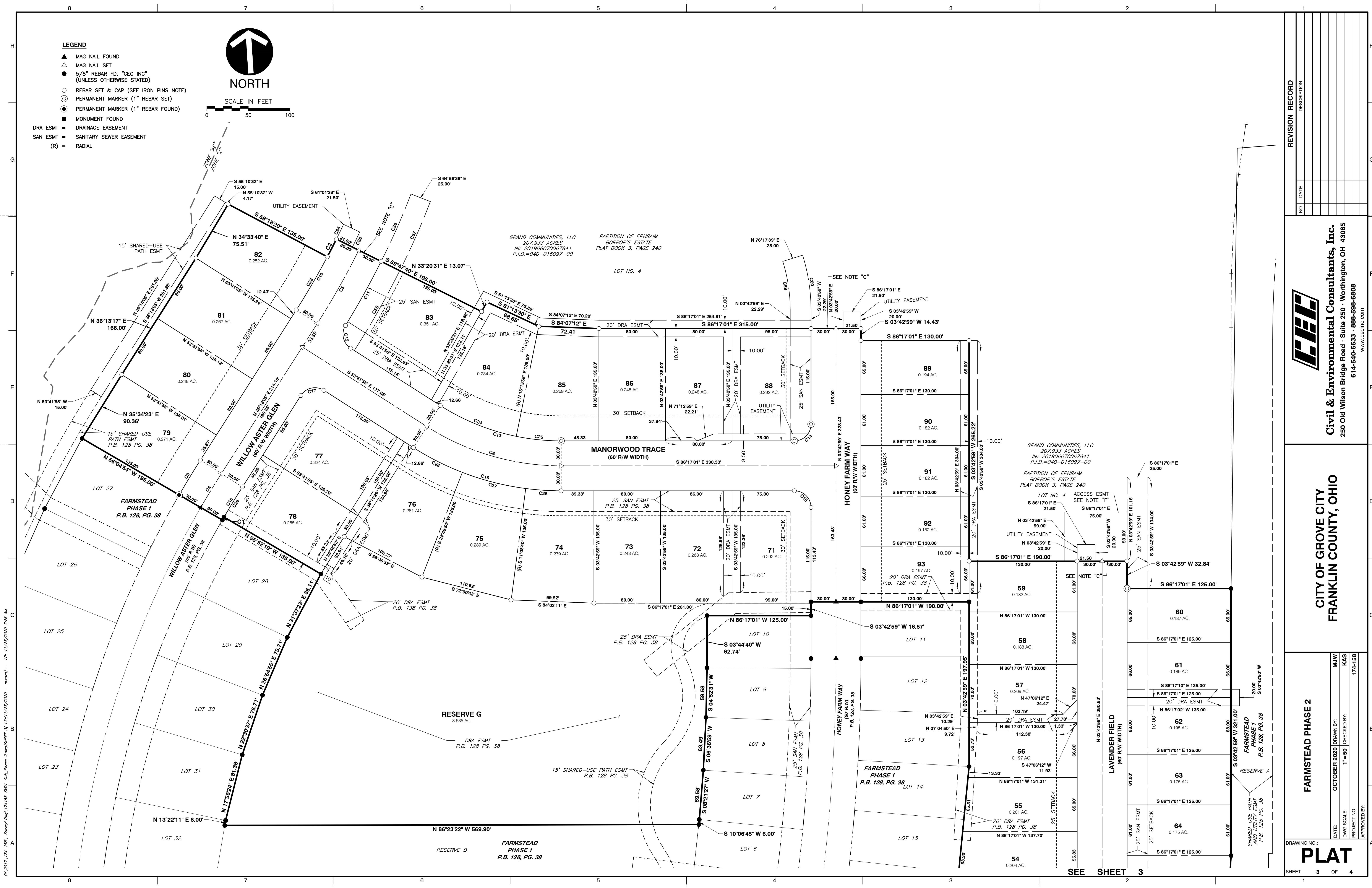


DRAWING NO.: PLAT		
SHEET 2 OF 4		
DATE: SEPTEMBER 2020		
APPROVED BY:	PROJECT NO: 174-158	
DWG SCALE: 1"=50'	CHECKED BY: DBP	
DRAWN BY: MUJ		
FARMSTEAD PHASE 2		
CITY OF GROVE CITY, OHIO FRANKLIN COUNTY, OHIO		
 Civil & Environmental Consultants, Inc. 250 Old Wilson Bridge Road · Suite 250 · Worthington, OH 43085 614-540-6633 · 888-598-6808 www.cecinc.com		
REVISION RECORD		
NO	DATE	DESCRIPTION

- LEGEND**
- ▲ MAG NAIL FOUND
 - △ MAG NAIL SET
 - 5/8" REBAR FD. "CEC INC" (UNLESS OTHERWISE STATED)
 - REBAR SET & CAP (SEE IRON PINS NOTE)
 - PERMANENT MARKER (1" REBAR SET)
 - PERMANENT MARKER (1" REBAR FOUND)
 - MONUMENT FOUND
- DRA ESMT = DRAINAGE EASEMENT
 SAN ESMT = SANITARY SEWER EASEMENT
 (R) = RADIAL



SCALE IN FEET
 0 50 100



NO	DATE	DESCRIPTION

Civil & Environmental Consultants, Inc.
 250 Old Wilson Bridge Road · Suite 250 · Worthington, OH 43085
 614-540-6633 · 888-598-6808
 www.cecinc.com

**CITY OF GROVE CITY
 FRANKLIN COUNTY, OHIO**

FARMSTEAD PHASE 2

DRAWING NO.: **PLAT**
 SHEET 3 OF 4

DATE: OCTOBER 2020 DRAWN BY: MJW
 DWG SCALE: 1"=50' CHECKED BY: KAS
 PROJECT NO: 174-158 APPROVED BY:

P:\2017\174-158-Survey\Draw\174-158-SV01-Sub_Phase 2.dwg(SHEET 3) LS(11/21/2020 - mmw) - LP: 11/20/2020 7:36 AM

